

The SNAC Organization - 2005

Bo Jönsson, Theoretical Chemistry, Lund

SNAC Members

Physics

Börje Johansson, (Chairman) Uppsala University

Oxana Smirnova, CERN/Lund University

Mats Persson, Chalmers University of Technology

Chemistry

Bo Jönsson, Lund University

Aatto Laaksonen, Stockholms University

Lars Ojamäe, Linköpings University

Johan Åqvist, Uppsala University

Engineering

Lars-Erik Lindgren, Luleå Technical University

Thomas Abrahamsson, Chalmers University of Technology

Per Lötstedt, Uppsala University

Earth Sciences

Kjell Rönmark, Umeå University

Gunilla Svensson, Stockholms University

SNAC Policy

An applicant receives support if:

- the application is reasonable
- the applicant has the relevant competence
- the applicant has "behaved" well in the past

SNAC Resources

HPC2N, Umeå

- Sarek, 384 AMD Opteron 248, 2.2 GHz
- Seth, 240 Athlon MP2000+ 1.66 Ghz

NSC, Linköping

- Monolith, 396 Intel Xeon, 2.2 GHz
- SGI 3800, 128 MIPS/RISC

PDC, Stockholm

- Lenngren, 628 Intel Xeon
- Lucidor, 180 HP Itanium2 0.9 GHz

SweGrid, Distributed over six centra

- 600 Intel P4, 2.8 GHz

How to write a SNAC application?

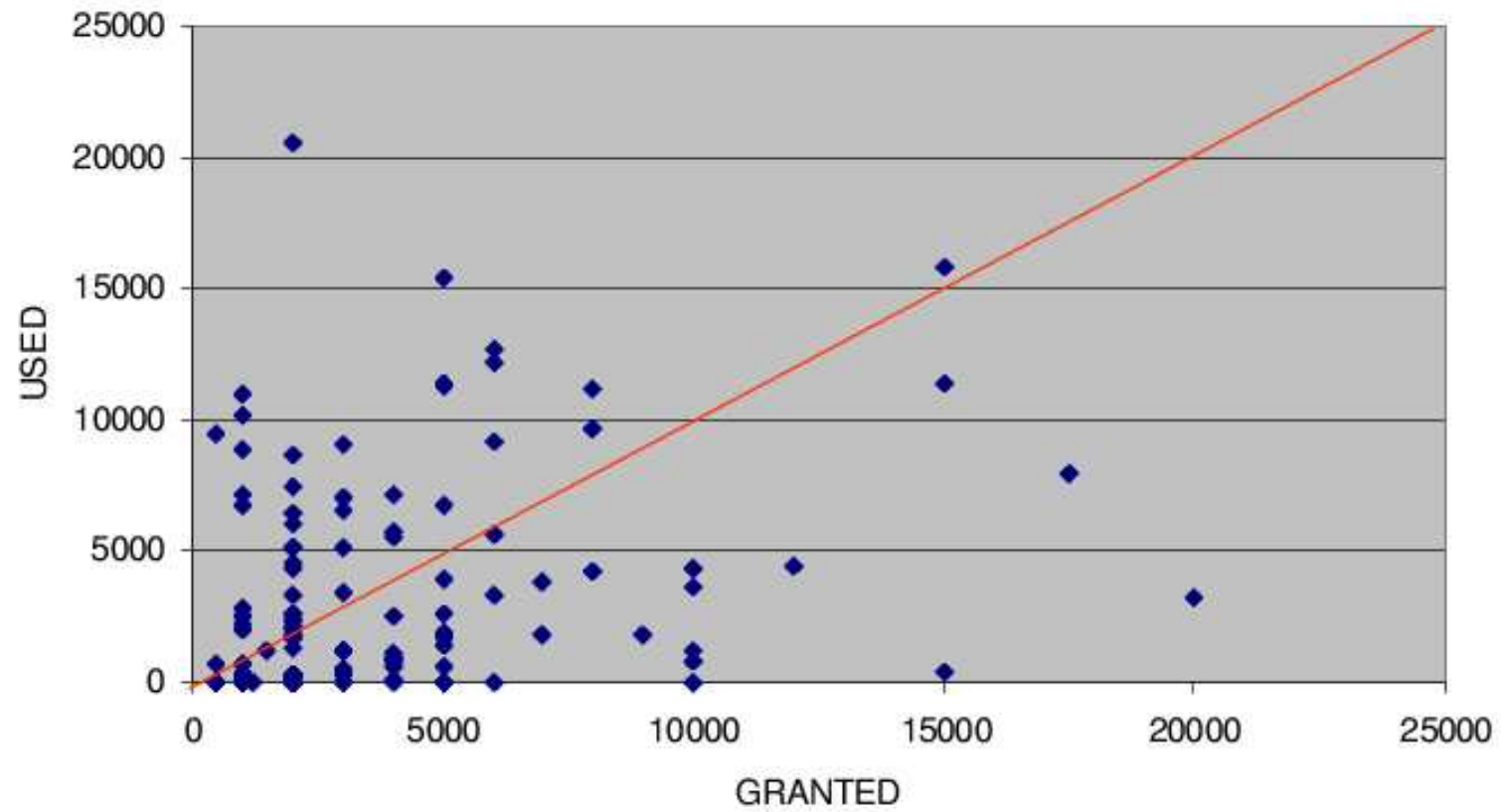
- Do not write one if you need less than 1000 h/month.
- Specify the resources in detail.
- Remember that there will always(?) be "bonus" time.
- Do not hesitate to be informal.

SNAC Applied vs Granted

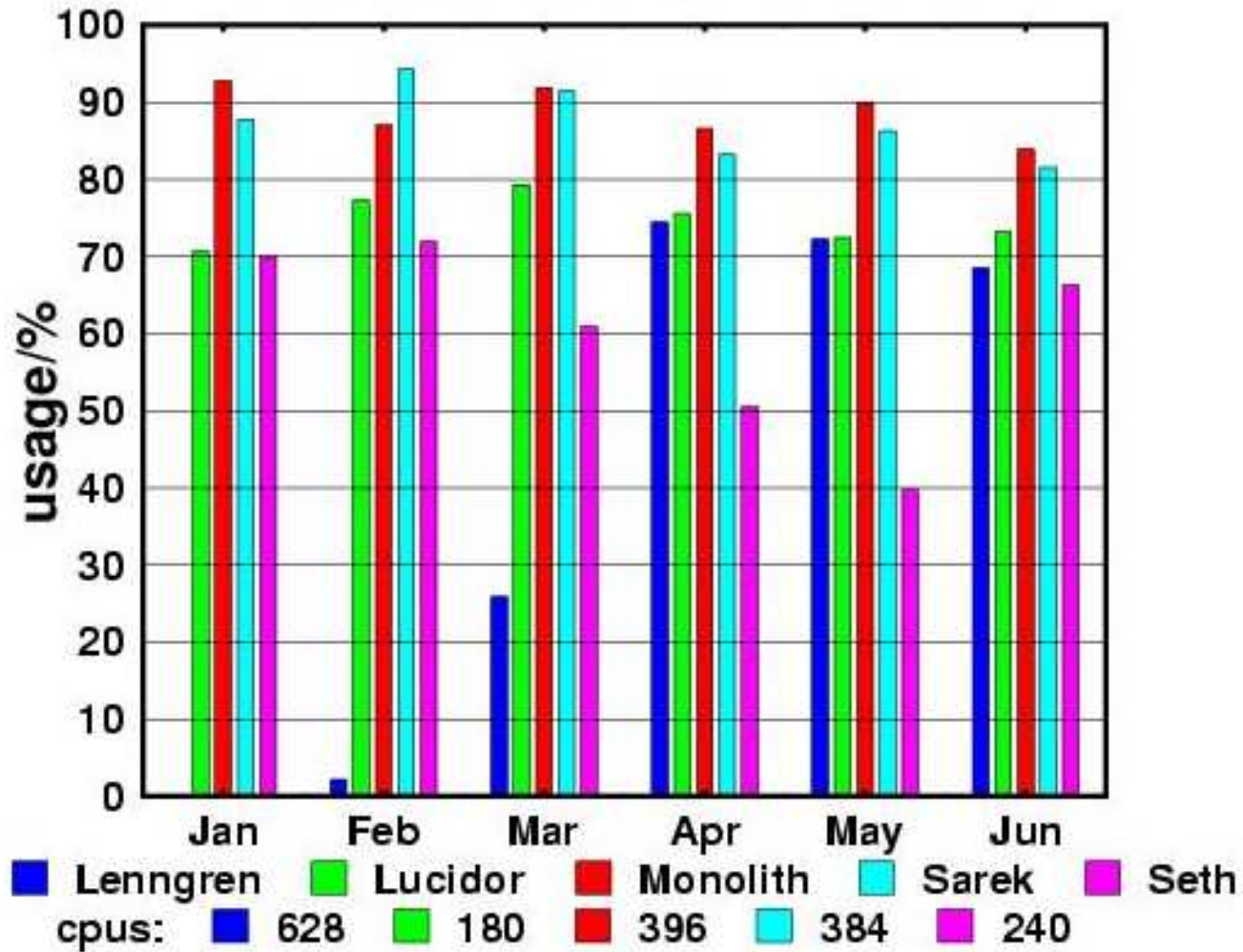
		2004			Medelvärde över år		
		Sökt	Beviljad	KVOT	Beviljad	Nyttjad	KVOT
HPC2N	Sarek	526 400	259 500	49%			
	SuperCluster	239 400	160 500	67%	200 358	164 811	82%
NSC	Monolith	726 200	208 700	29%	127 372	108 929	86%
	Ingvar				14 532	6 301	43%
	SGI	175 100	72 500	41%	58 432	40 906	70%
	T3E				38 731	21 776	56%
PDC	Dell	293 200	193 000	66%			
	Lucidor	223 100	74 600	33%	90 890	45 194	50%
		2 183 400	968 800	44%	530 314	387 917	73%

SNAC Used vs. Granted

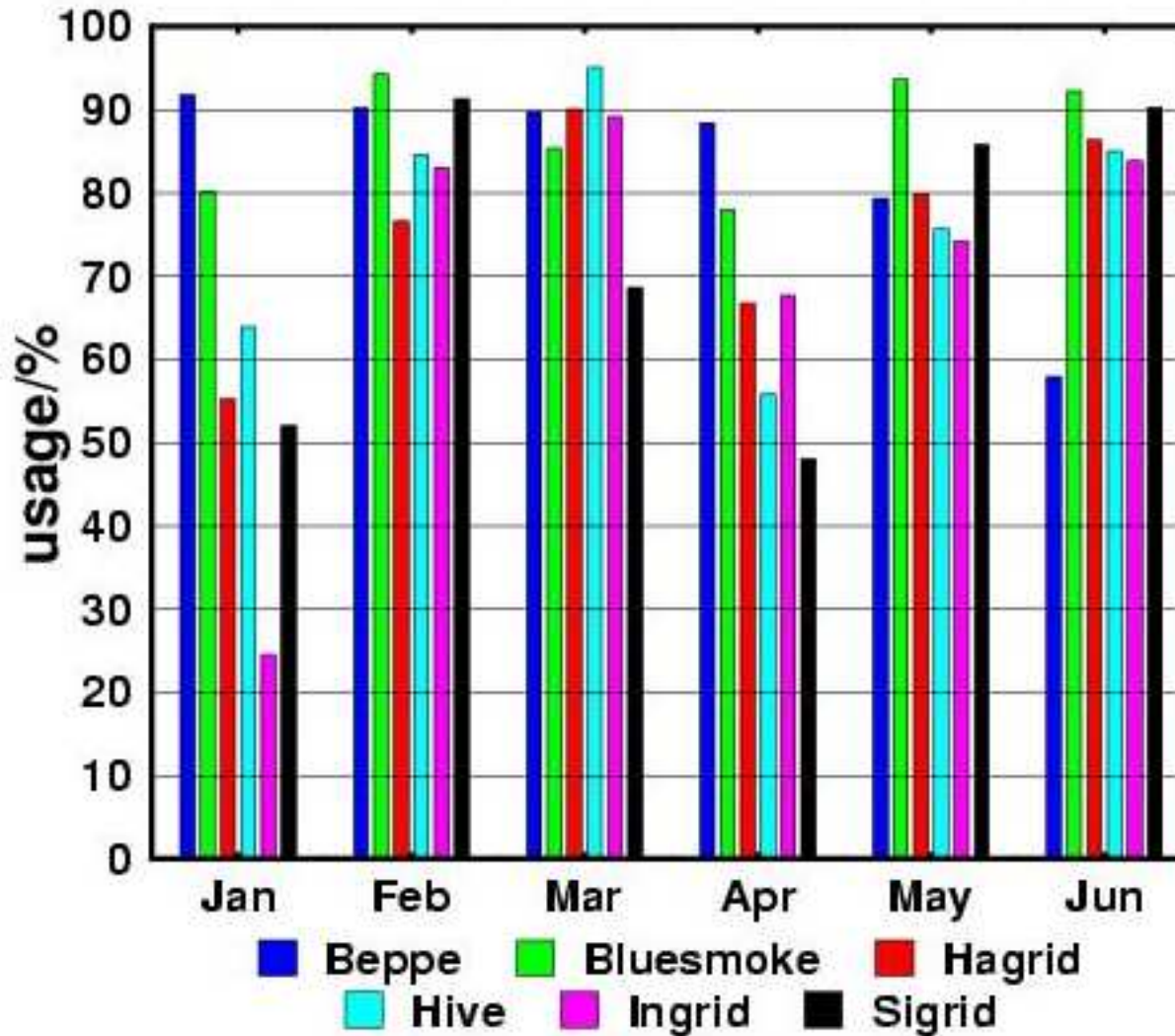
MONOLITH



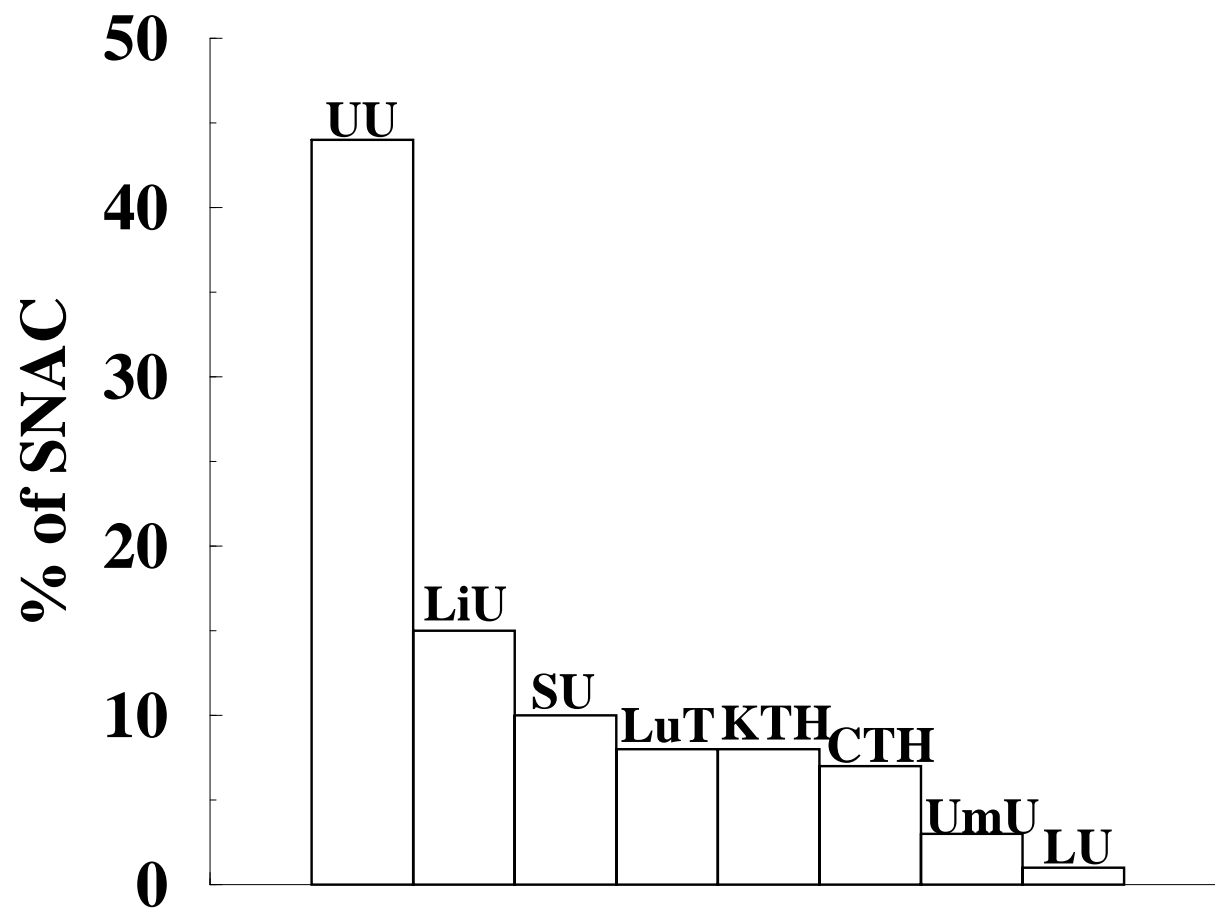
SNAC 2005/1st half



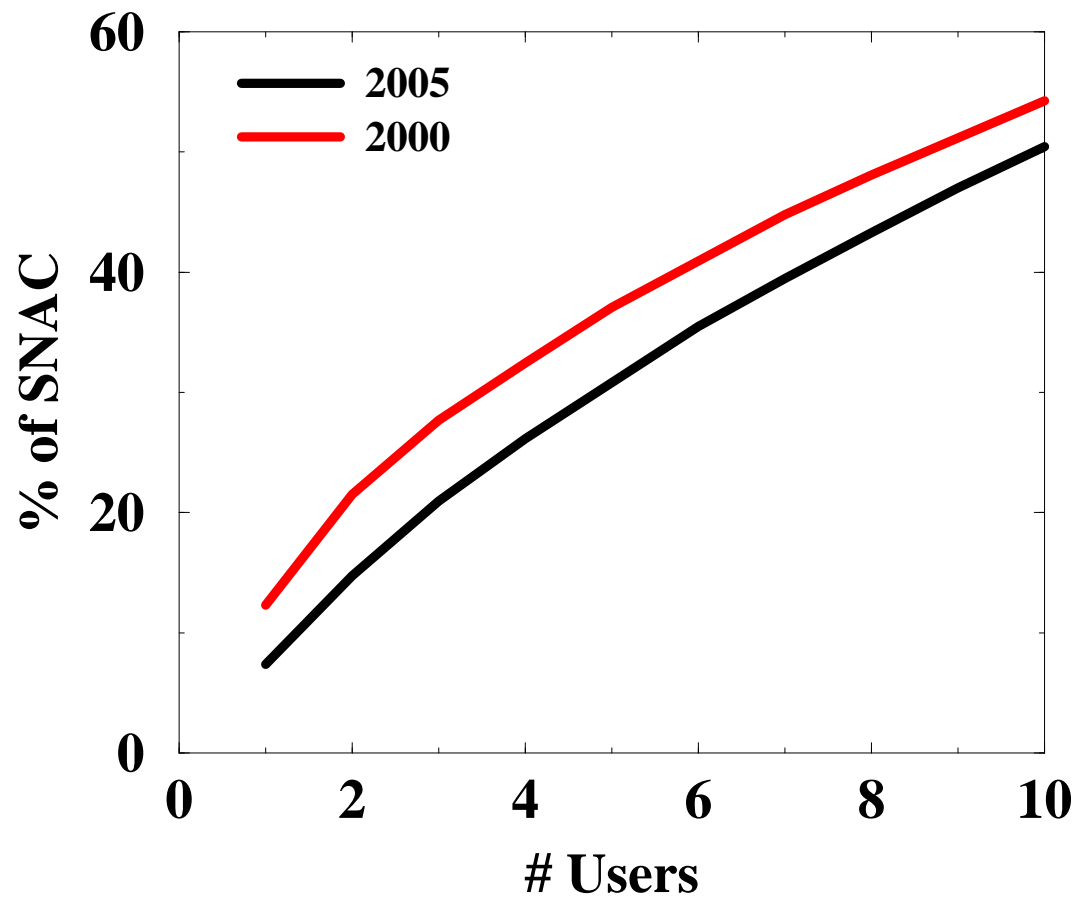
SweGrid 2005/1st half



Geographical Distribution



Individual Grants



SNIC/SNAC Problems

- Too much money that does not go to hardware.
- Resources must be more distributed.
- Centra must have a clear focus.